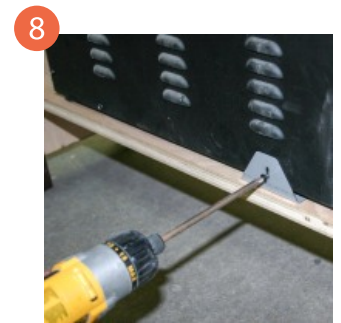
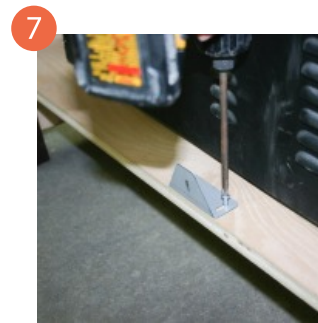
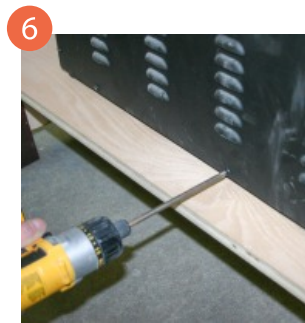
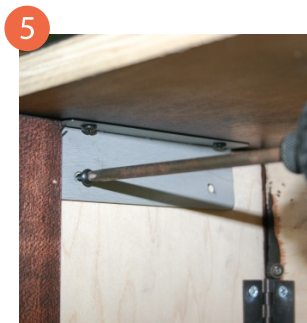
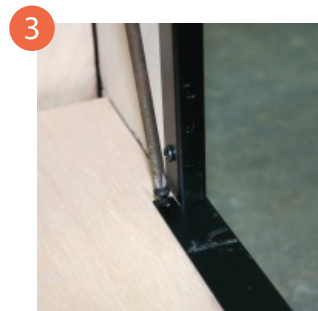
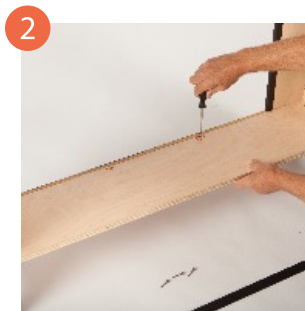
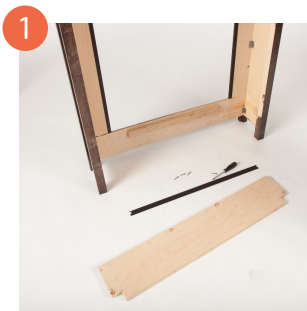


ZECL MANTLE

- 1) Stand cabinet up and fold out legs
- 2) Slide base into bottom and attach using provided wood screws
- 3) Drop in bottom trim and attach using 3/8" pan head screw
- 4) Place top on cabinet aligning with pre-drilled holes
- 5) Using 3/8" pan head screws secure mantel
- 6) Remove back center pan head screw (Note: Do NOT discard as it will be used later)
- 7) Attach back support bracket to base using 3/8" pan head screws
- 8) Re-attach removed screw from step 7 by running it through support bracket



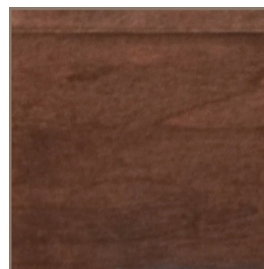
Available finishes



Natural Grain-
unfinished



Simply White



Espresso

Quality Craftsmanship

Beautifully hand-crafted cabinetry designed for the ZECL-30-3226. The ZECL Mantle has three finishes to choose from and is easy to assemble. Cabinet shown in espresso.

Mantles are not sold separately and are sold with the ZECL-30-3226 only.

Amantii